

GENERAL PURPOSE ANSWER SHEET

Name: _____

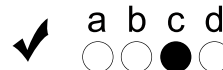
Date: _____

Class: _____

Score: _____

Learning the Basics .info

! Fill-in completely!



Fill-in completely a for True
Fill-in completely b for False

- | | | | | |
|---|---|---|---|---|
| 1. <input type="radio"/> a <input type="radio"/> b <input type="radio"/> c <input type="radio"/> d | 11. <input type="radio"/> a <input type="radio"/> b <input type="radio"/> c <input type="radio"/> d | 21. <input type="radio"/> a <input type="radio"/> b <input type="radio"/> c <input type="radio"/> d | 31. <input type="radio"/> a <input type="radio"/> b <input type="radio"/> c <input type="radio"/> d | 41. <input type="radio"/> a <input type="radio"/> b <input type="radio"/> c <input type="radio"/> d |
| 2. <input type="radio"/> a <input type="radio"/> b <input type="radio"/> c <input type="radio"/> d | 12. <input type="radio"/> a <input type="radio"/> b <input type="radio"/> c <input type="radio"/> d | 22. <input type="radio"/> a <input type="radio"/> b <input type="radio"/> c <input type="radio"/> d | 32. <input type="radio"/> a <input type="radio"/> b <input type="radio"/> c <input type="radio"/> d | 42. <input type="radio"/> a <input type="radio"/> b <input type="radio"/> c <input type="radio"/> d |
| 3. <input type="radio"/> a <input type="radio"/> b <input type="radio"/> c <input type="radio"/> d | 13. <input type="radio"/> a <input type="radio"/> b <input type="radio"/> c <input type="radio"/> d | 23. <input type="radio"/> a <input type="radio"/> b <input type="radio"/> c <input type="radio"/> d | 33. <input type="radio"/> a <input type="radio"/> b <input type="radio"/> c <input type="radio"/> d | 43. <input type="radio"/> a <input type="radio"/> b <input type="radio"/> c <input type="radio"/> d |
| 4. <input type="radio"/> a <input type="radio"/> b <input type="radio"/> c <input type="radio"/> d | 14. <input type="radio"/> a <input type="radio"/> b <input type="radio"/> c <input type="radio"/> d | 24. <input type="radio"/> a <input type="radio"/> b <input type="radio"/> c <input type="radio"/> d | 34. <input type="radio"/> a <input type="radio"/> b <input type="radio"/> c <input type="radio"/> d | 44. <input type="radio"/> a <input type="radio"/> b <input type="radio"/> c <input type="radio"/> d |
| 5. <input type="radio"/> a <input type="radio"/> b <input type="radio"/> c <input type="radio"/> d | 15. <input type="radio"/> a <input type="radio"/> b <input type="radio"/> c <input type="radio"/> d | 25. <input type="radio"/> a <input type="radio"/> b <input type="radio"/> c <input type="radio"/> d | 35. <input type="radio"/> a <input type="radio"/> b <input type="radio"/> c <input type="radio"/> d | 45. <input type="radio"/> a <input type="radio"/> b <input type="radio"/> c <input type="radio"/> d |
| 6. <input type="radio"/> a <input type="radio"/> b <input type="radio"/> c <input type="radio"/> d | 16. <input type="radio"/> a <input type="radio"/> b <input type="radio"/> c <input type="radio"/> d | 26. <input type="radio"/> a <input type="radio"/> b <input type="radio"/> c <input type="radio"/> d | 36. <input type="radio"/> a <input type="radio"/> b <input type="radio"/> c <input type="radio"/> d | 46. <input type="radio"/> a <input type="radio"/> b <input type="radio"/> c <input type="radio"/> d |
| 7. <input type="radio"/> a <input type="radio"/> b <input type="radio"/> c <input type="radio"/> d | 17. <input type="radio"/> a <input type="radio"/> b <input type="radio"/> c <input type="radio"/> d | 27. <input type="radio"/> a <input type="radio"/> b <input type="radio"/> c <input type="radio"/> d | 37. <input type="radio"/> a <input type="radio"/> b <input type="radio"/> c <input type="radio"/> d | 47. <input type="radio"/> a <input type="radio"/> b <input type="radio"/> c <input type="radio"/> d |
| 8. <input type="radio"/> a <input type="radio"/> b <input type="radio"/> c <input type="radio"/> d | 18. <input type="radio"/> a <input type="radio"/> b <input type="radio"/> c <input type="radio"/> d | 28. <input type="radio"/> a <input type="radio"/> b <input type="radio"/> c <input type="radio"/> d | 38. <input type="radio"/> a <input type="radio"/> b <input type="radio"/> c <input type="radio"/> d | 48. <input type="radio"/> a <input type="radio"/> b <input type="radio"/> c <input type="radio"/> d |
| 9. <input type="radio"/> a <input type="radio"/> b <input type="radio"/> c <input type="radio"/> d | 19. <input type="radio"/> a <input type="radio"/> b <input type="radio"/> c <input type="radio"/> d | 29. <input type="radio"/> a <input type="radio"/> b <input type="radio"/> c <input type="radio"/> d | 39. <input type="radio"/> a <input type="radio"/> b <input type="radio"/> c <input type="radio"/> d | 49. <input type="radio"/> a <input type="radio"/> b <input type="radio"/> c <input type="radio"/> d |
| 10. <input type="radio"/> a <input type="radio"/> b <input type="radio"/> c <input type="radio"/> d | 20. <input type="radio"/> a <input type="radio"/> b <input type="radio"/> c <input type="radio"/> d | 30. <input type="radio"/> a <input type="radio"/> b <input type="radio"/> c <input type="radio"/> d | 40. <input type="radio"/> a <input type="radio"/> b <input type="radio"/> c <input type="radio"/> d | 50. <input type="radio"/> a <input type="radio"/> b <input type="radio"/> c <input type="radio"/> d |

- | | | | | |
|---|---|---|---|--|
| 51. <input type="radio"/> a <input type="radio"/> b <input type="radio"/> c <input type="radio"/> d | 61. <input type="radio"/> a <input type="radio"/> b <input type="radio"/> c <input type="radio"/> d | 71. <input type="radio"/> a <input type="radio"/> b <input type="radio"/> c <input type="radio"/> d | 81. <input type="radio"/> a <input type="radio"/> b <input type="radio"/> c <input type="radio"/> d | 91. <input type="radio"/> a <input type="radio"/> b <input type="radio"/> c <input type="radio"/> d |
| 52. <input type="radio"/> a <input type="radio"/> b <input type="radio"/> c <input type="radio"/> d | 62. <input type="radio"/> a <input type="radio"/> b <input type="radio"/> c <input type="radio"/> d | 72. <input type="radio"/> a <input type="radio"/> b <input type="radio"/> c <input type="radio"/> d | 82. <input type="radio"/> a <input type="radio"/> b <input type="radio"/> c <input type="radio"/> d | 92. <input type="radio"/> a <input type="radio"/> b <input type="radio"/> c <input type="radio"/> d |
| 53. <input type="radio"/> a <input type="radio"/> b <input type="radio"/> c <input type="radio"/> d | 63. <input type="radio"/> a <input type="radio"/> b <input type="radio"/> c <input type="radio"/> d | 73. <input type="radio"/> a <input type="radio"/> b <input type="radio"/> c <input type="radio"/> d | 83. <input type="radio"/> a <input type="radio"/> b <input type="radio"/> c <input type="radio"/> d | 93. <input type="radio"/> a <input type="radio"/> b <input type="radio"/> c <input type="radio"/> d |
| 54. <input type="radio"/> a <input type="radio"/> b <input type="radio"/> c <input type="radio"/> d | 64. <input type="radio"/> a <input type="radio"/> b <input type="radio"/> c <input type="radio"/> d | 74. <input type="radio"/> a <input type="radio"/> b <input type="radio"/> c <input type="radio"/> d | 84. <input type="radio"/> a <input type="radio"/> b <input type="radio"/> c <input type="radio"/> d | 94. <input type="radio"/> a <input type="radio"/> b <input type="radio"/> c <input type="radio"/> d |
| 55. <input type="radio"/> a <input type="radio"/> b <input type="radio"/> c <input type="radio"/> d | 65. <input type="radio"/> a <input type="radio"/> b <input type="radio"/> c <input type="radio"/> d | 75. <input type="radio"/> a <input type="radio"/> b <input type="radio"/> c <input type="radio"/> d | 85. <input type="radio"/> a <input type="radio"/> b <input type="radio"/> c <input type="radio"/> d | 95. <input type="radio"/> a <input type="radio"/> b <input type="radio"/> c <input type="radio"/> d |
| 56. <input type="radio"/> a <input type="radio"/> b <input type="radio"/> c <input type="radio"/> d | 66. <input type="radio"/> a <input type="radio"/> b <input type="radio"/> c <input type="radio"/> d | 76. <input type="radio"/> a <input type="radio"/> b <input type="radio"/> c <input type="radio"/> d | 86. <input type="radio"/> a <input type="radio"/> b <input type="radio"/> c <input type="radio"/> d | 96. <input type="radio"/> a <input type="radio"/> b <input type="radio"/> c <input type="radio"/> d |
| 57. <input type="radio"/> a <input type="radio"/> b <input type="radio"/> c <input type="radio"/> d | 67. <input type="radio"/> a <input type="radio"/> b <input type="radio"/> c <input type="radio"/> d | 77. <input type="radio"/> a <input type="radio"/> b <input type="radio"/> c <input type="radio"/> d | 87. <input type="radio"/> a <input type="radio"/> b <input type="radio"/> c <input type="radio"/> d | 97. <input type="radio"/> a <input type="radio"/> b <input type="radio"/> c <input type="radio"/> d |
| 58. <input type="radio"/> a <input type="radio"/> b <input type="radio"/> c <input type="radio"/> d | 68. <input type="radio"/> a <input type="radio"/> b <input type="radio"/> c <input type="radio"/> d | 78. <input type="radio"/> a <input type="radio"/> b <input type="radio"/> c <input type="radio"/> d | 88. <input type="radio"/> a <input type="radio"/> b <input type="radio"/> c <input type="radio"/> d | 98. <input type="radio"/> a <input type="radio"/> b <input type="radio"/> c <input type="radio"/> d |
| 59. <input type="radio"/> a <input type="radio"/> b <input type="radio"/> c <input type="radio"/> d | 69. <input type="radio"/> a <input type="radio"/> b <input type="radio"/> c <input type="radio"/> d | 79. <input type="radio"/> a <input type="radio"/> b <input type="radio"/> c <input type="radio"/> d | 89. <input type="radio"/> a <input type="radio"/> b <input type="radio"/> c <input type="radio"/> d | 99. <input type="radio"/> a <input type="radio"/> b <input type="radio"/> c <input type="radio"/> d |
| 60. <input type="radio"/> a <input type="radio"/> b <input type="radio"/> c <input type="radio"/> d | 70. <input type="radio"/> a <input type="radio"/> b <input type="radio"/> c <input type="radio"/> d | 80. <input type="radio"/> a <input type="radio"/> b <input type="radio"/> c <input type="radio"/> d | 90. <input type="radio"/> a <input type="radio"/> b <input type="radio"/> c <input type="radio"/> d | 100. <input type="radio"/> a <input type="radio"/> b <input type="radio"/> c <input type="radio"/> d |